

# TOTAL GAS STATION SECURITY PROGRAM

**Tank Commander:**  
for underground  
fuel tank caps



**TuBAR high security lock:**  
for top doors



**TuBAR high security lock:**  
for bottom doors



**Pulser**  
security sleeve kit



**Totalizer**  
security cover



Crafting quality products  
in America since 1903.



**TANK  
COMMANDER**

**FIRST & ONLY  
CARB APPROVED  
THEFT DETERRENT DEVICE**

California Environmental Protection Agency  
AIR RESOURCES BOARD

Executive Orders:  
VR-101-L, VR-102-K, VR-103-E,  
VR-104-E, VR-105-C

# STOP SKIMMING, IDENTITY THIEF

**TuBAR**<sup>®</sup>

**high security locks are the proven solution for securing all fuel dispensers.**

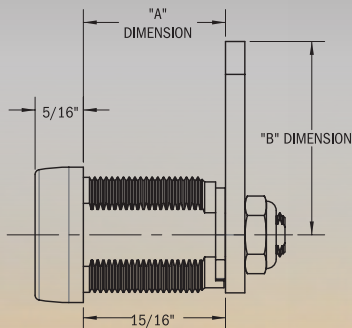
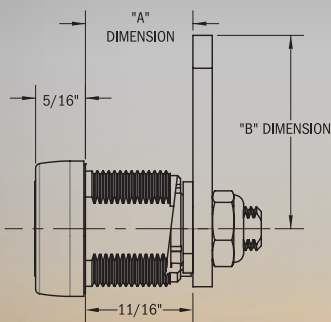
**BASE LOCKS**



11/16" lock



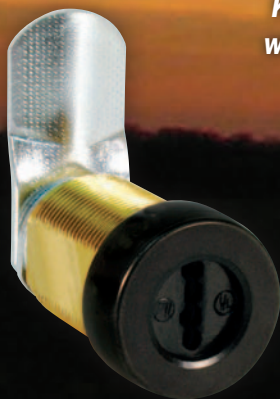
15/16" lock



**SPECIALIZED 15/16" LOCKS**



CRIND upper door lock with attack resistant cam



CRIND upper door lock



Ovation CAT upper door lock

**Existing locks vs. TuBAR High Security Locks**

**Key Codes**

Common, shared across many industries

Registered Key codes assigned by location only by CompX Security Products

**Key Control**

None - easily duplicated with no restrictions

Replacement keys only available by signature through CompX Security Products; NO key machines commercially available

**Key Blanks**

Readily available

Blanks not available

**Security**

Very low

Virtually impregnable to pulling, punching, drilling and other common physical attacks

**Lock Construction**

Die-cast

Hardened steel barrel, or solid brass composite keyway and dual side bar mechanism assure maximum protection against forced entry

**UL Listing**

None

UL 437 (15/16" only) available

**Key compatibility with underground fuel cap**

No

TuBAR high security locks can be keyed alike to the Tank Commander

# EFT AND FREE FLOW VENDING!

**HIGH SECURITY KEYS**



**SPECIALIZED 1 1/16" LOCK**



Skirt door lock with attack resistant cam



Vista 2 & 3  
CAT door lock

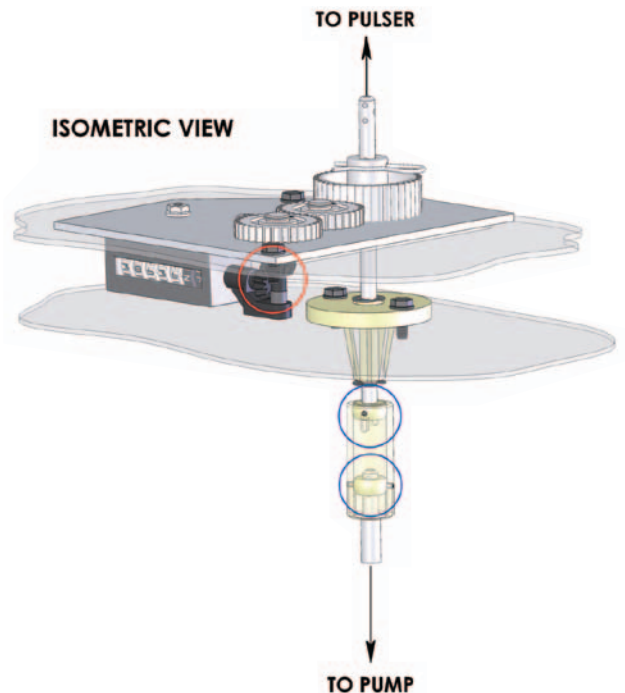
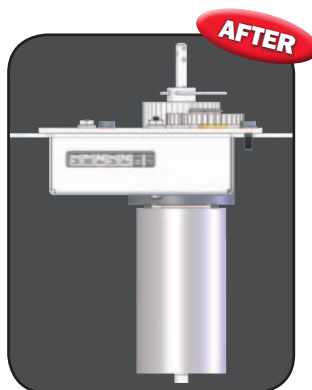
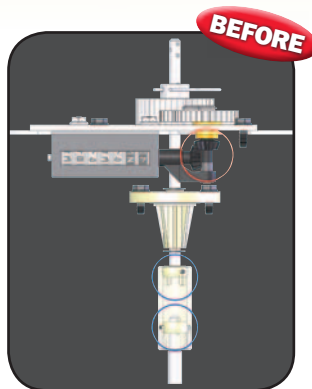
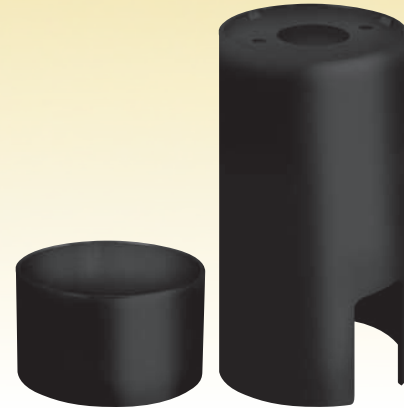
## Totalizer fuel security cover

- ◆ Stainless steel
- ◆ Covers and protects "free vend" gears on Gilbarco Advantage
- ◆ Stop replacing pulser drive shafts and stop losing fuel!
- ◆ Most effective with new CRIND and skirt door locks
- ◆ Easy field retrofit
  - Comes with instructions; also available online: [comp.com/gssp](http://comp.com/gssp)
  - No drilling



## Pulser cover

- ◆ Stops gas theft at Pulser
- ◆ Stainless steel construction
- ◆ Easy to install
- ◆ Protects pulser drive shaft in skirt and vent areas



Totalizer and Pulser are specially designed for Gilbarco Advantage.



# FUEL THEFT FROM UNDERGROUND TANKS

## Tank Commander features:

**Tank Commander fits all certified Phase 1 Vapor Recovery Systems: Phil-Tite, OPW, EBW, CNI and EMCO Wheaton**

- ◆ Stainless steel construction
- ◆ Vapor recovery seal remains intact
- ◆ Low profile fill cap included
- ◆ Fits common bronze adapters
- ◆ 24/7 protection for diesel and gas

### TuBAR high security locking

- ◆ TuBAR® lock for maximum key control
  - No key blanks available except from factory
  - Key series registered to your store(s)
- ◆ Keyed alike available - use the same key for both Tank Commander and dispenser

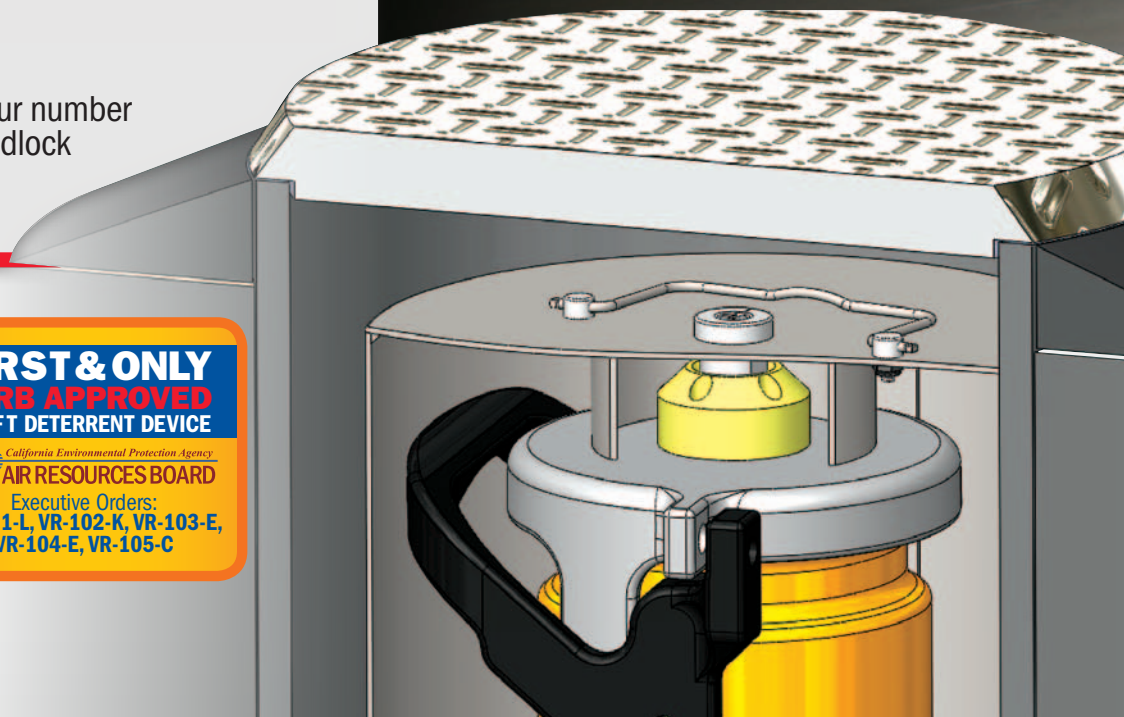
### Keyless convenience

- ◆ Available with heavy duty four number changeable combination padlock
- ◆ Or use existing padlock

TuBAR high security locking



Keyless Convenience



For more information, call 864.297.6655.

Copyright 2011 © CompX Security Products  
864.297.6655 / compx.com / PO Box 200, Mauldin, SC 29662

Any companies and/or products referred to herein are marks or registered trademarks of their respective companies, owners and/or mark holders. Products are constantly being improved and therefore may vary or change slightly without notice. Call 864.297.6655 for most up-to-date information.



Reorder #: F2644-006