

Introducing **CompXpress**

Special Keyed Pin Tumbler Locks shipped **NEXT BUSINESS DAY**

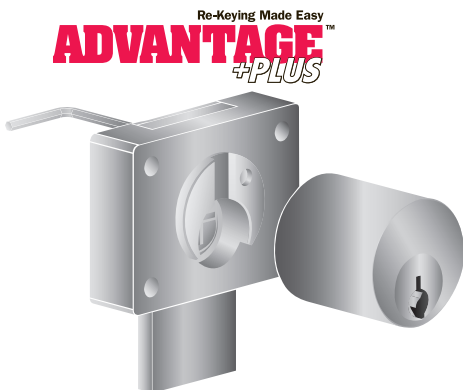
Master Keyed, Keyed Alike in groups

Part Number	Description/Type of Mounting	Cylinder length
C8163-26D+	Pin tumbler, Drawer, dead bolt	15/16"
C8173-26D+	Pin tumbler, LH or RH door, dead bolt	7/8"
C8174-26D+	Pin tumbler, LH or RH door, dead bolt	1-1/8"
C8175-26D+	Pin tumbler, LH or RH door, dead bolt	1-3/8"
C8177-26D+	Pin tumbler, Drawer, dead bolt	1-1/8"
C8178-26D+	Pin tumbler, Drawer, dead bolt	7/8"
C8179-26D+	Pin tumbler, Drawer, dead bolt	1-3/8"
C8101-26D	Pin tumbler, Lipped/overlay, cam	15/16"
C8102-26D	Pin tumbler, Flush, cam	1-1/16"
C8103-26D	Pin tumbler, Lipped/overlay, cam	1-3/16"
C8106-26D	Pin tumbler, Flush, cam	1-7/16"
C8108-26D	Pin tumbler, Flush, cam	1-3/4"
C8109-26D	Pin tumbler, Lipped/overlay, cam	1-3/4"
C8140-26D	Pin tumbler, sliding glass doors	N / A
C8142-26D	Pin tumbler, sliding wood doors, plunger	1-1/8"

+ Part numbers with the plus+ sign indicate locks featuring the Advantage Plus system.

- ➔ All locks are WI & ANSI/BHMA approved.
- ➔ Refer to the **CompX National** catalog for packaging and the **Architectural Specification Guide** for more information.
- ➔ **26D – dull chrome** available in the CompXpress program. Other finishes ship in five business days.
- ➔ Two locations: Rancho Cucamonga, CA & Mauldin, SC.
- ➔ Contact your CompX sales representative for pricing information.

The **Advantage Plus+** feature allows users to remove the cylinder while the lock remains in place. NO mounting screws need to be removed. Simply use the 5/64" Allen wrench from the back to remove the cylinder for re-keying.



All product manufactured and assembled in the United States.
ISO 9001 certified.



864.297.6655

compX.com

PO Box 200
Mauldin, SC 29662

Copyright 2006
© CompX Security Products

CompX
NATIONAL